

**1 APPLICATION DETAILS**

Ref: 22/03921/FUL  
 Location: Kickers House, 172A Selsdon Road, South Croydon, CR2 6PJ  
 Ward: South Croydon  
 Description: Demolition of 3no. garages at the rear of Nos. 172A - 174A (facing onto Helder Street) and erection of one two-storey 4-bed house; including associated works.  
 Drawing Nos: P9/001 Rev M, P9/002 Rev M, P9/003 Rev M, P9/004 Rev M, P9/005 Rev M, P9/006 Rev M, P9/007 Rev M, P9/008 Rev M  
 Applicant: Sterling Rose Homes Ltd  
 Agent: Mr Miheer Mehta of Sterling Rose Homes Ltd  
 Case Officer: Georgina Betts

	<b>1 bed</b> (2 person)	<b>2 bed</b> (3 person)	<b>3 bed</b> (4 person)	<b>4 bed</b> (6 person)	<b>TOTAL</b>
<b>Proposed</b> (market housing)				1	1

<b>Vehicle and Cycle Parking (London Plan Standards)</b>	
<b>PTAL: 4</b>	
<b>Car Parking maximum standard</b>	<b>Proposed</b>
Up to 0.5 - 0.75 spaces per dwelling	1
<b>Long Stay Cycle Storage minimum</b>	<b>Proposed</b>
2	2
<b>Short Stay Cycle Storage minimum</b>	<b>Proposed</b>
0	0

1.1 This application is being reported to committee because:

- The ward councillor (Cllr Maria Gatland) made representations in accordance with the Committee Consideration Criteria and requested committee consideration
- Objections above the threshold in the Committee Consideration Criteria have been received

**2 RECOMMENDATION**

2.1 That the Committee resolve to GRANT planning permission

2.2 That the Director of Planning and Sustainable Regeneration is delegated authority to issue the planning permission and impose conditions and informatives to secure the following matters:

**Conditions**

- 1) Commencement time limit of 3 years
- 2) Carried out in accordance with the approved drawings

Pre-commencement

- 3) Construction Logistics Plan to include a survey of the public highway

Above ground level

- 4) Sustainable urban drainage details
- 5) Landscaping and hard standing (to incorporate biodiversity enhancements and front boundary treatments)
- 6) Details of external materials to be submitted to and approved

Compliance

- 7) Carbon dioxide reduction
- 8) Water usage
- 9) In accordance with the Fire Strategy Statement
- 10) The dwelling shall achieve M4(2)
- 11) No enlargement of the proposed dwelling under permitted development
- 12) Any other planning condition(s) considered necessary by the Director of Planning and Sustainable Regeneration

**Informatives**

- 1) Community Infrastructure Levy
- 2) Code of practice for Construction Sites
- 3) Construction Logistics Informative
- 4) Any other informative(s) considered necessary by the Director of Planning and Sustainable Regeneration

**3 PROPOSAL AND LOCATION DETAILS**

**Proposal**

- 3.1 The proposal is for demolition of 3no. garages at the rear of Nos. 172A - 174A (facing onto Helder Street) and erection of one two-storey 4-bed house, including associated works.



Figure 1: proposed front elevation from Helder Street

### Amendments

- 3.2 Amended plans were received during the course of the application which has seen the repositioning of the dwelling, detaching it from 27 Helder Street. In addition, amendments have been made to the design of the dwelling and the layout of the front garden area. Third parties have been reconsulted regarding the amended plans given the extent of the changes.

### **Site and Surroundings**

- 3.3 The application site lies on the north side of Helder Street and is currently occupied by three detached disused garages, previously forming part of Kickers House, 172A Selsdon Road. The surrounding area is residential in character comprising predominantly of Victoria residential properties with some noticeable later infill developments and flatted developments nearby.

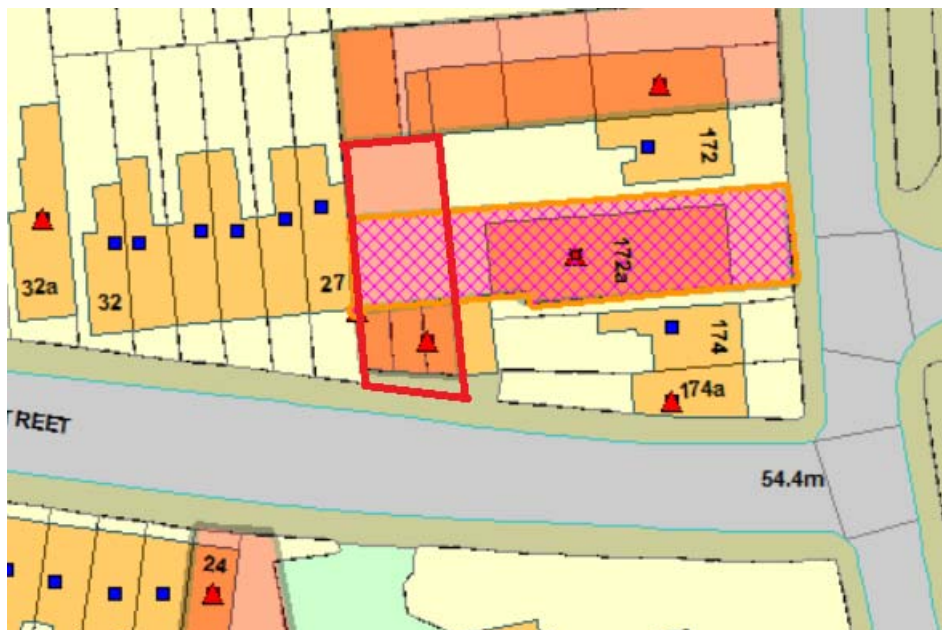


Figure 2: Site Location Plan

### **Planning Designations and Constraints**

- 3.4 The site is at risk of surface water flooding and lies within an archaeological priority zone.

### **Planning History**

- 3.5 There are a number of planning decisions relevant to the application that have been submitted across the frontage building at 172a Selsdon Road and the land the rear including the garages.

#### *Application site*

- 3.6 22/02158/FUL – Refused – 08.08.2022 (currently at appeal)  
Demolition of 3no. garages at the rear of Nos. 172A - 174A (facing on Helder Street) and erection of one two-storey 4-bed house; including associated works. Reason for refusal

1. The proposed development, by reason of the roof form and height, which would fail to respond to the roof forms present of adjacent properties in the street, would result in an incongruous addition to the street, and adversely impact upon the overall character of the street. As such, the proposal would be contrary to policy D3 of the London Plan (2021) and policies SP4, DM10.1 and DM10.7 of the Croydon Local Plan (2018).
2. The proposed development, by reason of its excessive level of on-site parking in a well-connected location, would unacceptably promote private car use over sustainable transport modes and would thus be contrary to policies T2, T6 and T6.1 of the London Plan (2021) and policy DM30 of the Croydon Local Plan (2018).

3.7 21/05838/FUL – Refused – 09.02.2022

Demolition of 3no. garages at the rear of Nos. 172A - 174A (facing on Helder Street) and erection of two storey building consisting of 2no. flats (1xstudio; 1x1bedroom); including associated works. This was refused on five grounds in relation to 1) lack of family units 2) character of the area 3) impact on neighbouring amenity 4) lack of playspace 5) lack of car parking and cycle/refuse stores.

*Building at 172a Selsdon Road*

3.8 21/05085/FUL – Approved – 01.07.2022

Alterations, erection of an additional storey to provide 1 flat and associated refuse and cycle storage.

3.9 21/06100/DISC – Approved – 28.02.2022

Discharge of condition 3 (Refuse and Cycle Parking) for attached to permission 21/05000/GPDO for Change of use from Class E to Class C3 to provide 4 self-contained flats under Schedule 2, Part 3, Class MA of the Town and Country Planning (General Permitted Development) (England) Order 2015 (as amended).

3.10 21/05000/GPDO – Prior Approval Approved – 08.12.2021

Change of use from Class E to Class C3 to provide 4 self-contained flats under Schedule 2, Part 3, Class MA of the Town and Country Planning (General Permitted Development) (England) Order 2015 (as amended).

3.11 19/03893/GPDO – Prior Approval Approved – 31.10.2019

Change of use of ground and first floors (Use Class B1 - office) to residential use (Use Class C3 - dwelling), to comprise of 3 residential units with associated parking, cycling and refuse storage facilities.

3.12 01/01092/P – Approved – 20.06.2001

Use of part of ground floor for purposes within class B1 (business).

3.13 88/01476/P - Approved – 29.06.1988

Use of ground floor premises for retail purposes within use class a1.

3.14 84/02714/P - Approved – 15.03.1985

Erection of two storey front extension to provide garage/store with offices over.

*Building at 172a Selsdon Road and application site*

### 3.15 20/04331/OUT – Refused – 23.12.2020

Demolition of existing buildings and erection of 2 new part 2 storey, part 3 storey buildings containing 1 x 3 bed, 3 x 2 bed and 2 x 1 bed apartments with a disabled parking space accessed off of Helder Street. Reasons for Refusal:

1. *The proposed development, by reason of its layout would result in an excessive form of development that would appear dominant and disproportionate, disrupting the established building lines of Helder Street and Selsdon Road. The development would therefore appear incongruous, visually intrusive and overbearing to the detriment of the form, proportion and appearance of the site and the surrounding neighbouring properties and the wider appearance of the area. As such, the proposal would be contrary to Policies 7.4, and 7.6 of the London Plan (2016), Policies D1 and D2 of the Draft London Plan, Policies SP4 and DM10 of the Croydon Local Plan (2018) and the Croydon Suburban Design Guide (2019).*
2. *The development would fail to contribute to meeting the strategic target of 30% of all new homes to have three or more bedrooms, contrary to Policy SP2.7 of the Croydon Local Plan (2018).*
3. *The proposed development, by reason of its parking arrangement and lack of visibility and sub-standard cycle and refuse storage would result in a detrimental impact to highway safety and would be contrary to policies DM29, DM30 of the Croydon Local Plan (2018).*
4. *The proposal would result in loss of privacy to neighbouring 172 and 172 by reason of overlooking caused by limited distanced between balconies and habitable windows facing the rear elevations of these neighbours. The proposed development would also result in a loss of light and outlook to the rear elevations of these neighbours which could be contrary to Policy DM10.6 of the Croydon Local Plan (2018) and Croydon's Suburban Design Guide (2019).*
5. *The proposed development by reason of its site layout would give rise to a poor standard of accommodation. By reason of the limited spatial separation between the proposed blocks, the development would result in overlooking of habitable spaces. The development also fails to provide an accessible, onsite communal amenity space to serve the development. This would be contrary to Policies DM10.5 and DM10.6 of the Croydon Local Plan (2018).*

## 4 SUMMARY OF KEY REASONS FOR RECOMMENDATION

- The principle of the residential development is acceptable given the residential character of the surrounding area and the need for housing nationally and locally;
- The unit is a 4-bedroom family dwelling which is acceptable;
- The quality of accommodation is acceptable for future residents;
- The design and appearance of the development is of an acceptable quality, and it is not considered that it would harm the character of the surrounding area;
- The proposal would not create undue harm to the amenity of the majority of nearby residential properties and their occupiers, although harm is identified to 172A Selsdon Road but considered overall, in the planning balance, acceptable;
- The level of parking and impact upon highway safety and efficiency would be acceptable;

- Impacts upon biodiversity are acceptable;
- All remaining sustainability aspects can be controlled by conditions.

4.1 The following sections of this report summarise the officer assessment and the reason for the recommendation.

## 5 CONSULTATION RESPONSE

5.1 The views of the Planning Service are expressed in the MATERIAL PLANNING CONSIDERATIONS section below.

## 6 LOCAL REPRESENTATION

6.1 A total of 31 neighbouring properties were notified about the application and invited to comment.

6.2 A re-consultation on revised plans took place between 25/01/2023 and 8/02/2023.

6.3 The total number of representations received from neighbours, local groups etc in response to notification and publicity of the application were as follows:

No of individual responses: 24      Objecting: 22    Supporting: 1    Neutral: 1

6.4 The following issues were raised in representations that are material to the determination of the application, and they are addressed in substance in the next section of this report:

<b>Objection</b>	<b>Officer comment</b>
<b>Character and design</b>	
<ul style="list-style-type: none"> <li>• Not in keeping</li> <li>• Out of character</li> <li>• Over development</li> <li>• Loss of green space/loss of permeable surfacing</li> </ul>	<i>Covered within paragraphs 8.5 to 8.13</i>
<b>Neighbouring amenity</b>	
<ul style="list-style-type: none"> <li>• Noise and general disturbance</li> <li>• Pressure on localised parking availability</li> <li>• Overlooking and loss of privacy</li> <li>• Loss of light</li> </ul>	<i>Covered within paragraphs 8.24 to 8.30</i>
<b>Transport and Highways impacts</b>	
<ul style="list-style-type: none"> <li>• Highway safety concerns given the position of the site on a busy road</li> </ul>	<i>Covered within paragraphs 8.33 to 8.38</i>
<b>Not material matters</b>	
<ul style="list-style-type: none"> <li>• Devalue existing properties</li> </ul>	This is not a material planning consideration

6.5 Councillor Maria Gatland made the following representations:

- Overdevelopment
- Visually intrusive dominating the garden of 172 Selsdon road
- Out of character
- Harm to the residential amenities of 27 Helder Street

*Officer response: All points are covered in the report below.*

## **7 RELEVANT PLANNING POLICIES AND GUIDANCE**

### **Development Plan**

7.1 The Council's adopted Development Plan consists of the London Plan (2021), the Croydon Local Plan (2018) and the South London Waste Plan (2022). Although not an exhaustive list, the policies which are most relevant to the application are:

#### London Plan (2021)

- D1 London's form, character and capacity growth
- D3 Optimising site capacity through the design led approach
- D4 Delivering Good Design
- D5 Inclusive Design
- G5 Urban Greening
- G6 Biodiversity and access to nature
- G7 Trees and Woodlands
- SI 2 Minimising Greenhouse Gas Emissions
- SI 8 Waste Capacity and Net Waste Self-Sufficiency
- SI 12 Flood Risk Management
- SI 13 Sustainable Drainage

#### Croydon Local Plan (2018)

- SP2 Homes
- SP4 Urban Design and Local Character
- SP6 Environment and Climate Change
- DM1 Housing Choice for Sustainable Communities
- DM10 Design and Character □ DM13 Refuse and Recycling
- DM16 Promoting Healthy Communities
- DM19 Promoting and Protecting Healthy Communities
- DM23 Development and Construction
- DM25 Sustainable Drainage Systems and Reducing Flood Risk
- DM27 Biodiversity
- DM28 Trees
- DM29 Promoting Sustainable Travel and Reducing Congestion
- DM45 Shirley

7.2 The Development Plan should be read as a whole, and where policies conflict with each other, the conflict must be resolved in favour of the policy contained in the last document to be adopted, approved or published as part of the development plan, (in accordance with s38(5) of the Planning and Compulsory Purchase Act 2004).

### **Planning Guidance**

#### National Planning Policy Framework (NPPF)

7.3 Government Guidance is contained in the NPPF, updated on 20 July 2021, and accompanied by the online Planning Practice Guidance (PPG). The NPPF sets out a presumption in favour of sustainable development, requiring that development which accords with an up-to-date local plan should be approved without delay. The NPPF identifies a number of key issues for the delivery of sustainable development, those most relevant to this case are:

- Delivering a Sufficient Supply of Homes
- Promoting Sustainable Transport
- Achieving Well Designed Places

#### SPDs and SPGs

7.4 There are also several Supplementary Planning Documents (SPD) and Supplementary Planning Guidance (SPG) documents which are material considerations. Although not an exhaustive list, the most relevant to the application are:

- London Housing SPG (March 2016)
- Technical Housing Standards: Nationally Described Space Standard (2015)
- National Design Guide (2021)

## **8 MATERIAL PLANNING CONSIDERATIONS**

8.1 The main planning issues raised by the application that the committee must consider are:

1. Principle of development
2. Design and impact on character of the area
3. Quality of residential accommodation
4. Impact on neighbouring residential amenity
5. Trees, landscaping and biodiversity
6. Access, parking and highway impacts
7. Flood risk and energy efficiency
8. Other Planning Issues
9. Conclusions

### **Principle of development**

8.2 The Croydon Local Plan (CLP) sets out a housing target of 32,890 homes over a 20-year period from 2016-2036 (1,645 homes per year). The London Plan (LP) requires 20,790 of those homes to be delivered within a shorter 10 year period (2019-2029), resulting in a higher target of 2,079 homes per year.

8.3 The CLP also sets out a target for development on Windfall sites of 10,060 homes (approximately 503 per year). The London Plan requires 6,410 net completions on small sites (below 0.25 hectares in size) over 10 years, with a small sites housing target of 641 per year.

8.4 CLP Policy SP2 explains that developments should ensure land is used efficiently. London Plan policy H1 states that boroughs should optimise housing delivery on sites of PTAL 3-6 or within 800m of a train station or town centre boundary. The site has a PTAL of 4 and is a 580m walk from South Croydon Train Station. It is therefore suitable



for residential intensification in policy terms, subject to compliance with other material planning considerations.

- 8.5 CLP policy SP2.7 sets a strategic target for 30% of all new homes over the plan period to have 3 or more bedrooms to ensure that the borough's need for family sized units is met. The proposal is for a 4-bedroom house which meets the target.
- 8.6 The proposed development would include the demolition of the existing garages and the erection of a four-bedroom family dwelling and would contribute to the Councils identified housing need.
- 8.7 The three garages are in a poor state of repair, with the roofs having been removed, so are not fit for purpose. Therefore, the principle of their loss is accepted.
- 8.8 Given that the proposal would not result in the loss of valued garages and would contribute to the Councils housing stock the principle of the development can be supported.

### **Design and impact on character of the area**

- 8.9 CLP policy SP4.1 states that the council will require development of a high quality, which respects and enhances Croydon's varied local character and contributes positively to public realm, landscape and townscape to create sustainable communities.
- 8.10 CLP policy DM10.1 has a presumption in favour of 3 storey dwellings, which should respect the development pattern, layout; siting, the scale, height, massing, and density; and the appearance, existing materials, and built and natural features of the surrounding area.
- 8.11 CLP Policy DM10.7 requires developments to incorporate high quality materials that respond to the local character in terms of other things durability, attractiveness, sustainability, texture and colour. This policy also requires roof forms to positively contribute to the character of the local and wider area with proposals being sympathetic with its local context.
- 8.12 CLP Policy DM10.1 (a) requires the development pattern, layout and siting to respect that of the surrounding area. CLP policy DM10.1 (c) requires proposals to respect the appearance, existing materials and built and natural features of the surrounding area.
- 8.13 The application site lies to the northern side of Helder Street and is currently occupied by three disused garages, which appear to have formed part of the demise of the host property at 172a Selsdon Road and have subsequently been subdivided. The proposed dwelling, while technically backland in nature, would front onto Helder Street and as such would integrate into its setting and form part of the street scene of Helder Street. Appearing as a continuation of the existing street scene, the proposals scale, mass and proportionality would be respectful of its Victorian Setting. The amended plans which have been received during the course of this application have sought to provide a separation distance to 27 Helder Street. The separation distance of 1.6 metres would enable access to the rear garden while also providing a sense of permeability between the old and new development. The applicant seeks to provide one off street parking space which would not result in an enlargement to the crossover

given the width of the existing dropped kerb. Planting would be incorporated into the proposal and would provide a visual improvement when viewed from the street scene.

- 8.14 It is noted that the proposed plot would have a marginally reduced depth when compared to its immediate neighbours. However, given the limited visibility of the rear of the site the reduced depth of the plot would not result in significant harm to the character and appearance of the area to warrant a refusal of planning permission.
- 8.15 Turning to activity patterns, the proposed development would appear as a new detached dwelling within an established street scene. The access to the new dwelling would be provided to the southern elevation as per the adjacent properties. Parking would be to the front and would be accessed directly from Helder Street. The activity pattern associated with the proposed 4-bedroom six-person dwelling would be low given its single occupancy and would not be dissimilar in character terms to the nearby residential properties.
- 8.16 It is recognised that the proposal would bring about some change in terms of the intensification of the use of the site. However, the increased activity would not be at odds in such a suburban location and can be supported. The proposal as set out in this submission is materially different from that refused planning permission in August 2018. The amendments that were received and reconsulted on in January 2023 included the re-siting of the dwelling 1.2 metres from the boundary with 27 Helder Street and 300mm from the boundary with 172a Selsdon Road. The repositioning of the dwelling ensures that the dwelling appears detached while ensuring that a 1.2 metre side access path is provided to the rear garden. Given the increased separation to the site boundaries the depth of the building has been increased by approximately 1.2 metres Officers are therefore satisfied that the applicant has now overcome the previous refusal reason (as set out above) in this respect.



Figure 3: Front elevation as part application 22/02158/FUL



**PROPOSED FRONT ELEVATION**

Figure 4: Front elevation as part of this application

8.17 Having regards to the modest increase in housing the proposed development is not considered to result in significant harm to the character and appearance of the area to warrant a refusal of planning permission. The development would therefore accord the aforementioned policies in this respect.

**Quality of residential accommodation**

8.18 LP policy D6 states that housing developments should be of a high quality and provide adequately sized rooms with comfortable and functional layouts. It sets out minimum Gross Internal Area (GIA) standards for new residential developments. CLP policy SP2.8 also deals with quality and standards. The table below demonstrates the GIAs of each residential dwelling:

Unit	Size (bedroom/person)	GIA (sqm) proposed	Min. GIA (sqm)	Amenity Space (sqm)	Min. Amenity Space (sqm)	Built in storage space (sqm)	Min. built in storage space (sqm)
1	4b/6p	109	106	38.6	9	1.5	1.5

Table 1: scheme considered against London Plan Policy D6 and Table 3.1

8.19 As shown on the table above, the proposed dwelling would comply with LP standards on minimum floorspace areas, storage space, and amenity space. The bedrooms would comply with parts 2, 3, and 4 of policy D6 in relation to bedroom size standards. The dwelling would have adequate floor to ceiling heights for the entire dwelling and would be dual aspect. Adequate light levels and ventilation would therefore be achieved.

8.20 Given the above it is considered that adequate floor areas and space standards would be provided for future occupiers.

Amenity Space

8.21 CLP policy DM10.4c states: All proposals for new residential development will need to provide private amenity space that provides a minimum amount of private amenity space of 5m<sup>2</sup> per 1-2 person unit and an extra 1m<sup>2</sup> per extra occupant thereafter.

- 8.22 CLP policy DM10.4d states: All proposals for new residential development will need to provide private amenity space.
- 8.23 The proposed development provides amenity space well in excess of the space standards and is of a size suitable for a two-storey family property.

#### Accessible Dwellings

- 8.24 LP policy D7 states that 10% of new build housing should meet Building Regulation requirement M4(3) 'Wheelchair User Dwellings'; and all other dwellings should meet the Building Regulation requirement M4(2) 'Accessible and Adaptable Dwellings' which requires step free access to all units and the facilities of the site.
- 8.25 The proposed dwelling would have step-free access with a W/C on the ground floor and the private outdoor space connected to the entrance storey. The proposal appears capable of meeting M4(2) and given the scale of development proposed this is considered acceptable, with final details secured at Building Control stage.

#### Fire Safety

- 8.26 LP policy D12A states that in the interests of fire safety and to ensure the safety of all building users, all development proposals must achieve the highest standards of fire safety. The applicant has submitted a Fire Strategy Statement which satisfies the requirements of Policy D12 of the London Plan 2021. Full fire safety measures would be secured at the Building Regulations stage.
- 8.27 Overall, the standard of accommodation is considered to be acceptable, subject to conditions.

#### **Impact on neighbouring residential amenity**

- 8.28 CLP policy DM10.6 states that the Council will ensure proposals protect the amenity of occupiers of adjoining buildings and will not result in direct overlooking into their habitable rooms or private outdoor space and not result in significant loss of existing sunlight or daylight levels. CLP policy DM10.6(c) outlines that proposals for development should not result in direct overlooking of private outdoor space (with the exception of communal open space) within 10m perpendicular to the rear elevation of a dwelling.
- 8.29 CLP Policy DM10.6c requires new developments to not result in direct overlooking of private space 10m perpendicular to the rear elevation of an existing neighbouring property.

#### 27 Helder Street

- 8.30 The proposed dwelling would have an approximate width of 6.8 metres and an approximate depth of 9.4 metres. The proposed dwelling would be sited approximately 1.2 metres from the western boundary with 27 Helder Street and 300mm from the eastern boundary with 174 Selsdon Road. The proposed dwelling would not project beyond the overhang of 27 Helder Street. Given the position of the dwelling and its separation to 27 Helder Street the proposal is not considered to appear visually intrusive or overbearing to No27. No windows are proposed in the western flank elevation of the proposed dwelling and as such the proposal would not result in a loss of privacy to No27.

#### 174 Selsdon Road



8.34 Officers acknowledge that the proposal would result in a degree of harm to the residential amenities of 172A Selsdon Road. However, during the course of this application amendments have been made to improve the overall design of the building, stepping this away from the neighbouring property at 27 Helder Street which has pushed the built form closer to No172A. The repositioning of the dwelling has ensured that the proposal appears detached, respecting the pattern and rhythm of Helder Street. The harm to the amenities of 172A Selsdon Road is acknowledged but has to be weighed in the planning balance. Design improvements are noted while weight is attached to the provision of much needed family home within a highly sustainable location. In addition, the proposal would result in the redevelopment of brownfield land in which the framework actively encourages.

8.35 A degree of harm to the residential amenities of 172A Selsdon Road would occur as a result of this development. However, when weighing this impact in the overall planning balance Officers are of the view that the benefits would outweigh this harm when taking the policies of the development plan as a whole.

### Trees, landscaping and biodiversity

8.36 LP Policy G7 and CLP policy DM10.8 and DM28 seek to retain existing trees and vegetation. CLP policy DM10.8 requires proposals to incorporate hard and soft landscaping.

8.37 The site current contains three garages and is a derelict in nature with no on-site vegetation. The proposed development would not result in the loss of any protected trees or valued landscape features.

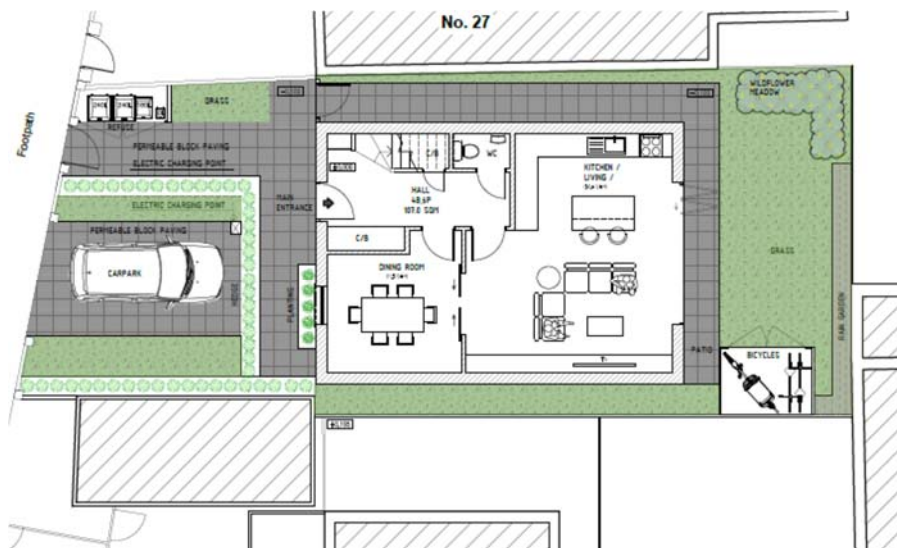


Figure 7: site layout plan

8.38 The above image shows the proposed ground floor arrangement and where there is space for soft landscaping. Final hard and soft landscaping matters are capable of being secured through condition and in doing so the proposal would seek to enhance the quality of the development and would contribute to the suburban character of the surrounding area, given the current garages on site. Such landscaping proposals are capable of incorporating a betterment in terms of biodiversity that are proportionate to the development proposed. Subject to a suitably worded condition the proposal would comply with the aforementioned policies

## **Access, parking and highway impacts**

- 8.39 LP Policy T6.1 suggests a provision of up to 0.75 spaces per dwelling for developments within PTAL 4. CLP Policy DM30 and LP policy T5 (and Table 10.2) requires the provision of a total of 1.5no. cycle parking spaces for the development proposed in this application. The proposal complies with the maximum parking standards in the London Plan while the proposal is capable of providing cycle parking at a greater ratio to that set out in Policy T5 of the London Plan.
- 8.40 The current garages on site are in a poor condition and not fit for purpose, so would not result in any cars being displaced from them onto the street.
- 8.41 The application site lies within an established residential area and while parking appears congested (based on site visit observations and representations from third parties) and restricted on Helder Street and Selsdon Road, Helder Street itself is not subject to a controlled parking zone and is one way, with traffic going westwards. The proposal incorporates one off street parking space and would not reduce on street parking provision given the extent of the existing dropped kerb, which would be reduced down in depth through highway agreement. Given the sites PTAL rating of 4, where the London Plan sets a maximum parking standard at 0.5-0.75, the proposal would meet the maximum parking standards providing 1 onsite parking bay. Vehicular manoeuvres would be reduced to one parking bay, as opposed to the existing three garages, this reduction would reduce potential conflict between road users and improve highway safety.
- 8.42 Cycle parking would be provided within the rear garden area within a dedicated store and would be accessed via a 1.2 metre path to the west, the location and access to such a store is therefore considered acceptable.
- 8.43 Policy DM13 requires the design of refuse and recycling facilities to be treated as an integral element of the overall design. Refuse storage would be provided to the western boundary and such is capable of being presented on collection days within a 20 metre drag distance. Whilst being presented on the frontage is not an ideal situation, weight has to be given to the fact the scheme is for one house (so not larger bins as required for flatted development) and the road contains terraced properties with small front gardens, generally low walls and bins located within them. The elevations indicate a 1m high front boundary that would help screen the bins from the road; final details are proposed to be secured via condition. The location of the refuse store is therefore considered acceptable. However, Officers recommend that further details are secured via condition to ensure that the store is constructed using appropriate materials and that landscaping is incorporated to help soften the appearance of the structure from within the street scene.
- 8.44 Given the close proximity of the site to a Primary School and the busy nature of the area it is recommended that a condition is attached to require the submission of a Construction Logistics Plan (CLP). The CLP shall include a survey of the surrounding footways and carriageway prior to commencement of works on site to ensure that any damage to the highway as a result of the building works would be repaired at the cost of the developer.
- 8.45 Overall, in terms of transport matters, the proposal is considered acceptable.

## **Flood risk and energy efficiency**

- 8.46 The site is at risk of surface water flooding but is not located within Flood Zones 1, 2 and 3; it is therefore noted that the proposal has the potential to contribute to surface water run-off. In accordance with LP Policies SI 12 and SI 13 and CLP Policy DM25 it is reasonable that the proposed development seeks to reduce the cause and effect of surface water flooding through the incorporation of Sustainable Drainage Systems (SuDS) as part of the wider landscape strategy. The submitted flood risk assessment identifies SuDS options, primarily permeable paving, soft landscaping and draining at reduced run-off rates. Subject to the incorporation of an appropriately worded condition the proposal would accord with the aforementioned policies.
- 8.47 CLP policy SP6 requires development proposals to both achieve the national technical standard for energy efficiency in new homes.
- 8.48 The proposed development is capable of meeting the energy hierarchy of the LP and would therefore be in accordance with CLP policy SP6. In addition, the development could achieve a reduction in CO2 emissions beyond the Building Regulations Part L and meet a minimum water efficiency standard of 110 litres/person/day as set out in Building Regulations Part G. These aspects would be secured via condition.

## **Other Planning Issues**

- 8.49 The development would be liable for a charge under the Community Infrastructure Levy (CIL).

## **Conclusions**

- 8.50 The proposed development would contribute to the Boroughs identified need for family dwellinghouses. Such an approach would seek to make better use of brownfield land in an established residential area and would result in sustainable development, of which significant weight should be attached. The design of the development is appropriate to the character and appearance of the area while the separation to the site boundaries would ensure that the proposal would not appear cramped within its plot. Parking would be provided within the front garden area while a soft landscaping condition can ensure that the frontage area is treated sensitively to respect the wider suburban character. Adequate amenity would be provided for future occupiers. It has been identified that harm to the residential amenities of 172a Selsdon Road would arise as a result of the development, but such harm is outweighed by wider public benefits while being considered by Officers to be at the lower end of such a scale. Acceptable levels of car and cycle parking would be provided and have been found to be in accordance with the London Plan 2021. In addition, no further dropped kerbs would be required and the proposal would seek to utilise the existing vehicular access onto Helder Street, the proposal would not pose a risk to highway safety. All other matters are capable of being secured through condition. Where sustainable development is proposed the framework it is clear that planning permission should be granted without delay. Officers are therefore satisfied that the proposal is acceptable having regards to the development plan as a whole.
- 8.51 All other relevant policies and considerations, including the statutory duties set out in the Equalities Act 2010, the Human Rights Act, the Planning and Compulsory Purchase Act, and the Town and Country Planning Act, have been taken into account. Given the consistency of the scheme with the Development Plan and weighing this



against all other material planning considerations, the proposal is considered to be acceptable in planning terms subject to the detailed recommendation set out in section 2 (RECOMMENDATION).